



SERVICE INSTRUCTIONS: 12135

Part Number 12135

For all Vane pumps except p/n 10056

Kit includes:

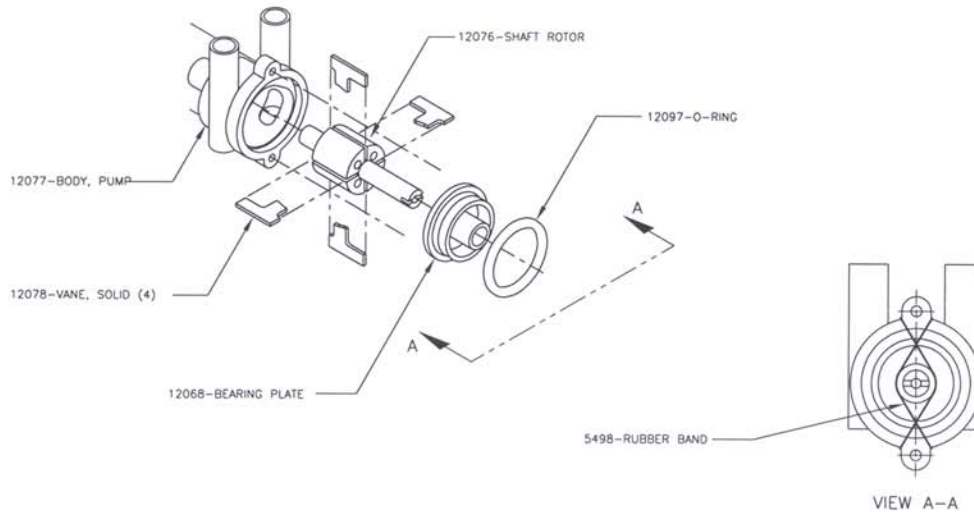
4 Vanes

p/n 12078

1 O-Ring, Viton

p/n 12097

1 Instruction Sheet



To replace vanes, loosen the two Screws holding the pumphead onto the drive housing. Remove the pumphead, including the rotor, vanes, bearing plate and O-Ring seal. These parts will usually slide out together. Try to remove them as a group.

Holding this group of parts vertically with the slotted shaft down, grasp the shaft and slowly lift the pump housing up off of the rotor. This will expose the vanes.

**Note:** Each pair of opposite vanes communicates with the other through the slot in the rotor. In order for one pair of vanes to move without interference, the other pair must be in the extreme in or out position. Note also that each pair of opposite vanes is assembled with its internal fingers in the same direction -- either up or down. If one pair has its fingers in the up direction, the other pair has its fingers in the down direction.

When reassembling the pump, hold the rotor vertically with the slotted end of the shaft down and with the bearing plate in place. Replace the vanes in exactly the same manner, keeping one vane of each pair all the way into its slot in the rotor. The housing will drop on easiest if the two spouts are aligned in a direction midway between these two vanes.

Before sliding the pumphead parts into the drive housing, make sure that the rotor shaft turns freely and that the O-Ring is in place on the bearing plate.

MICROPUMP, INC.  
A Unit of IDEX Corporation  
PO Box 8975 Vancouver, WA 98668-8975 Phone 360.253.2008 Fax 360.253.2008  
MICROPUMP LIMITED

A Subsidiary of Micropump, Inc.

Howard Road, Eaton Socon St. Neots Cambridgeshire PE19 8ET England Phone 44(0)1480.356600 Fax 44(0)1480.356300